

Power Grid 22C

Student's Name _____

A

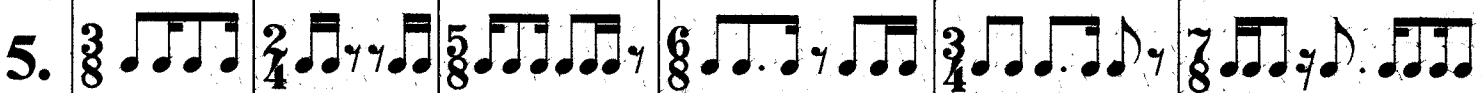
B

C

D

E

F



Note: Do lines horizontally across only.

For evaluation purposes, only the preparatory will be counted out loud in Power Grids 20C & 21C. After that (due to the combination of meters), the student will continue the test without a metronome. Perform the evaluations at 60 beats = quarter note, or 120 beats = eighth note, per minute.